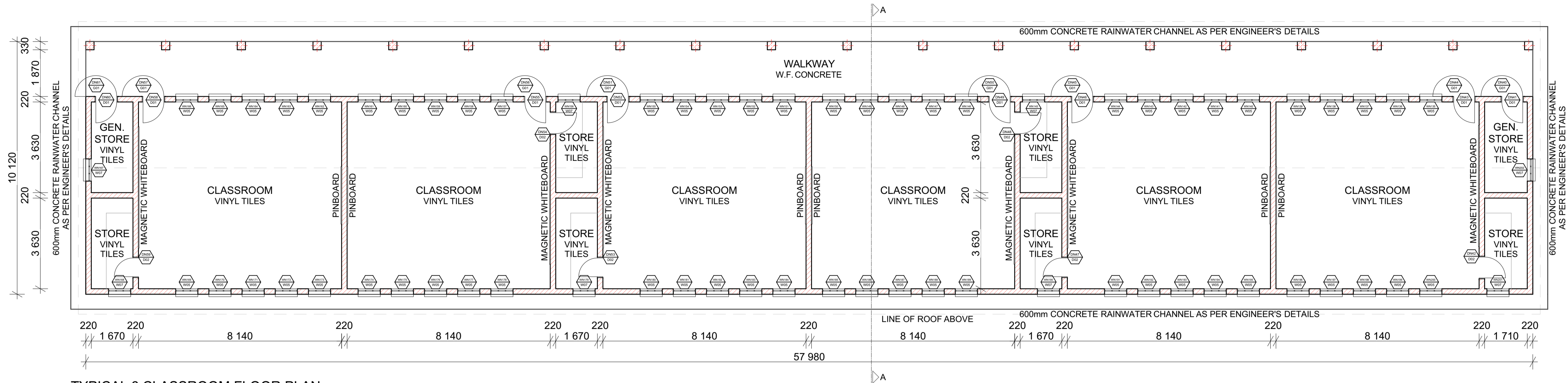
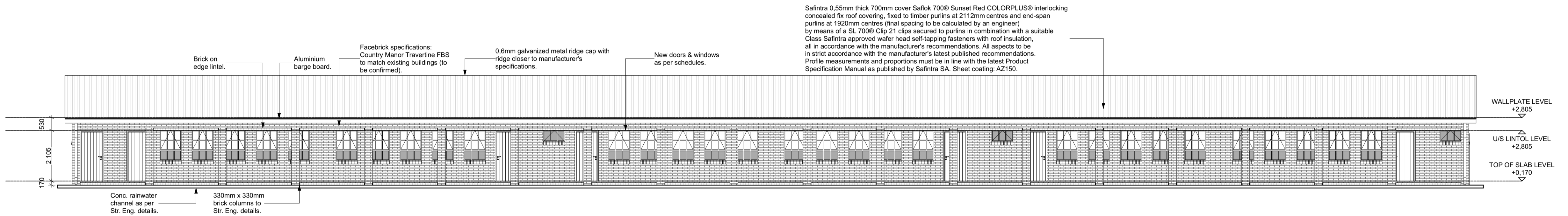


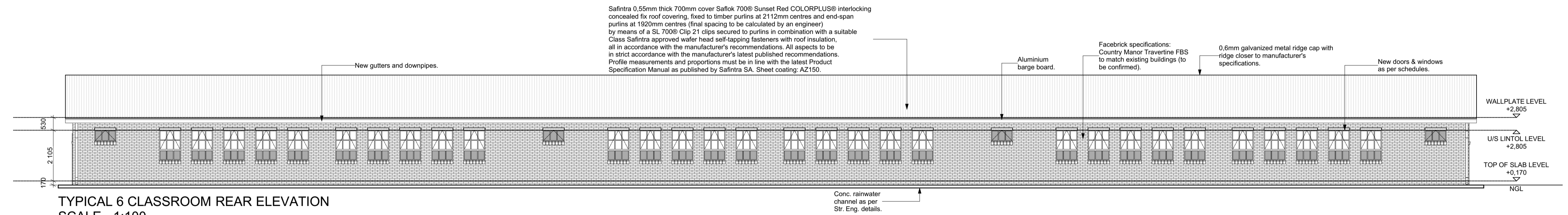
NOTES:
1. All boundaries, dimensions and levels are to be checked on site before construction and any discrepancies are to be reported to the office of the Architect.
2. Partial Service: Any discrepancies with site or other information is to be advised to the Architect and direction or approval is to be sought before the implementation of the detail.
3. Do not scale the drawing.
4. For the purpose of coordination, all relevant parties must check this information prior to implementation and report any discrepancies to the Architect.



TYPICAL 6 CLASSROOM FLOOR PLAN
SCALE - 1:100

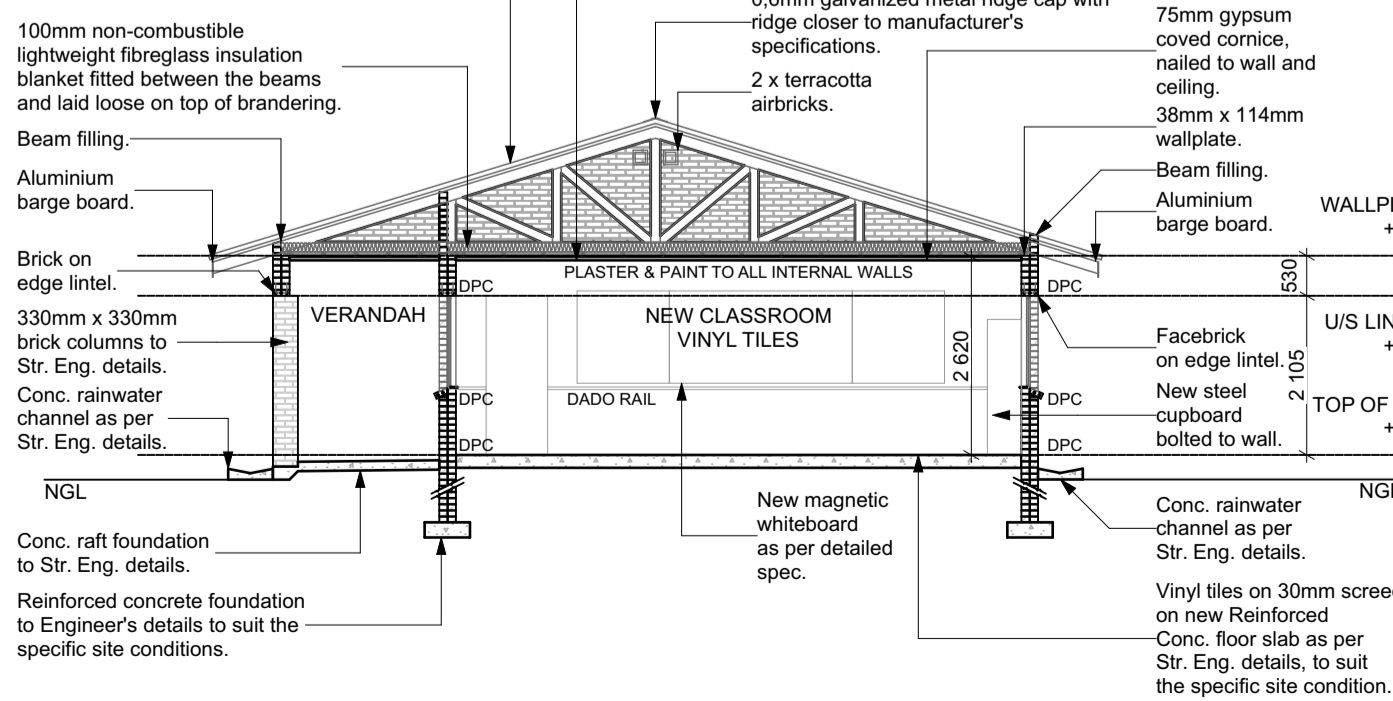


TYPICAL 6 CLASSROOM FRONT ELEVATION
SCALE - 1:100



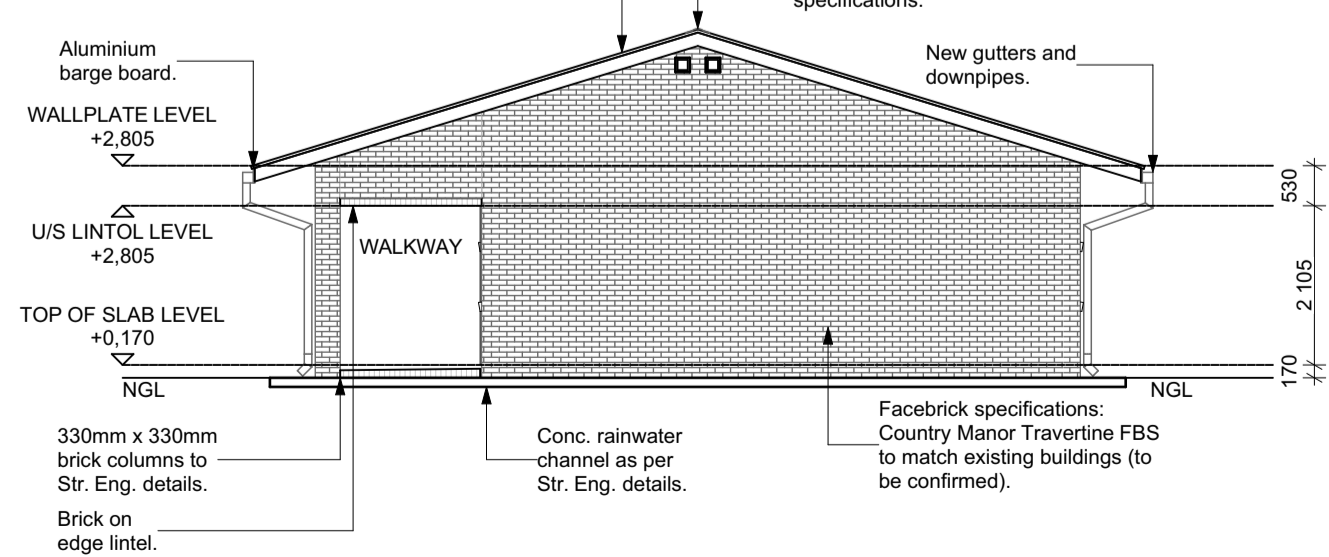
TYPICAL 6 CLASSROOM REAR ELEVATION
SCALE - 1:100

Safintra 0,55mm thick 700mm cover Saflok 700®
Rain Cloud COLORPLUS® interlocking
concealed fix roof covering, fixed to timber
purlins at 2112mm centres and end-span
purlins at 1920mm centres (final spacing
to be calculated by an engineer)
by means of a SL 700® Clip 21 clips secured to
purlins in combination with a suitable
Class Safintra approved wafer head self-tapping
fasteners with roof insulation,
all in accordance with the manufacturer's
recommendations. All aspects to be
in strict accordance with the manufacturer's
latest published recommendations.
Profile measurements and proportions must
be in line with the latest Product
Specification Manual as published by
Safintra SA. Sheet coating: AZ150.



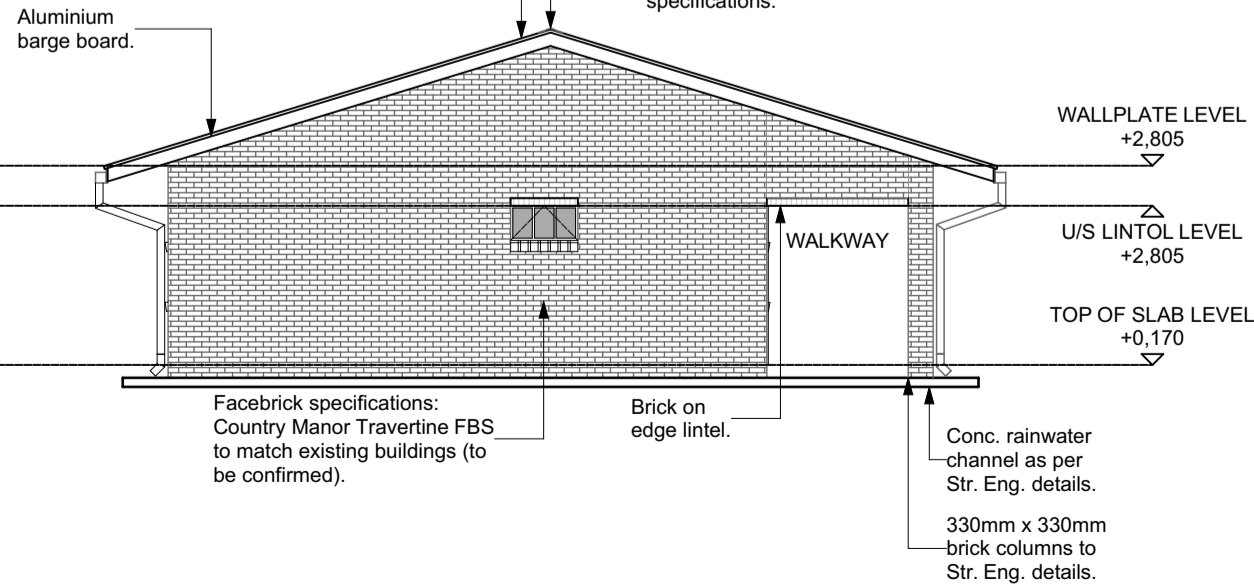
TYPICAL SECTION A - A
SCALE - 1:100

Safintra 0,55mm thick 700mm cover Saflok 700®
Sunset Red COLORPLUS® interlocking
concealed fix roof covering, fixed to timber
purlins at 2112mm centres and end-span
purlins at 1920mm centres (final spacing
to be calculated by an engineer)
by means of a SL 700® Clip 21 clips secured to
purlins in combination with a suitable
Class Safintra approved wafer head self-tapping
fasteners with roof insulation,
all in accordance with the manufacturer's
recommendations. All aspects to be
in strict accordance with the manufacturer's
latest published recommendations.
Profile measurements and proportions must
be in line with the latest Product
Specification Manual as published by
Safintra SA. Sheet coating: AZ150.



TYPICAL SIDE ELEVATION
SCALE - 1:100

Safintra 0,55mm thick 700mm cover Saflok 700®
Sunset Red COLORPLUS® interlocking
concealed fix roof covering, fixed to timber
purlins at 2112mm centres and end-span
purlins at 1920mm centres (final spacing
to be calculated by an engineer)
by means of a SL 700® Clip 21 clips secured to
purlins in combination with a suitable
Class Safintra approved wafer head self-tapping
fasteners with roof insulation,
all in accordance with the manufacturer's
recommendations. All aspects to be
in strict accordance with the manufacturer's
latest published recommendations.
Profile measurements and proportions must
be in line with the latest Product
Specification Manual as published by
Safintra SA. Sheet coating: AZ150.



TYPICAL SIDE ELEVATION
SCALE - 1:100

Revisions:			
Rev No	Date	Description	Rev By
A	31/10/23	For Information Purposes Only	KG

Architect :

Name :
Signature :
Client :
Name :
Signature :



DBSA
DEVELOPMENT BANK OF SOUTHERN AFRICA

Project: **CONDITION ASSESSMENT
MONONTSHA
INTERMEDIATE SCHOOL**

Drawing description:
**PROPOSED NEW 6 CLASSROOM PLANS,
SECTIONS AND ELEVATIONS**

Drawn: ISENZECO ENGINEERING
Scale/s: AS SHOWN ON DRAWING

FOR INFORMATION
Drawing Number: 082-MIS-108
Revision: A